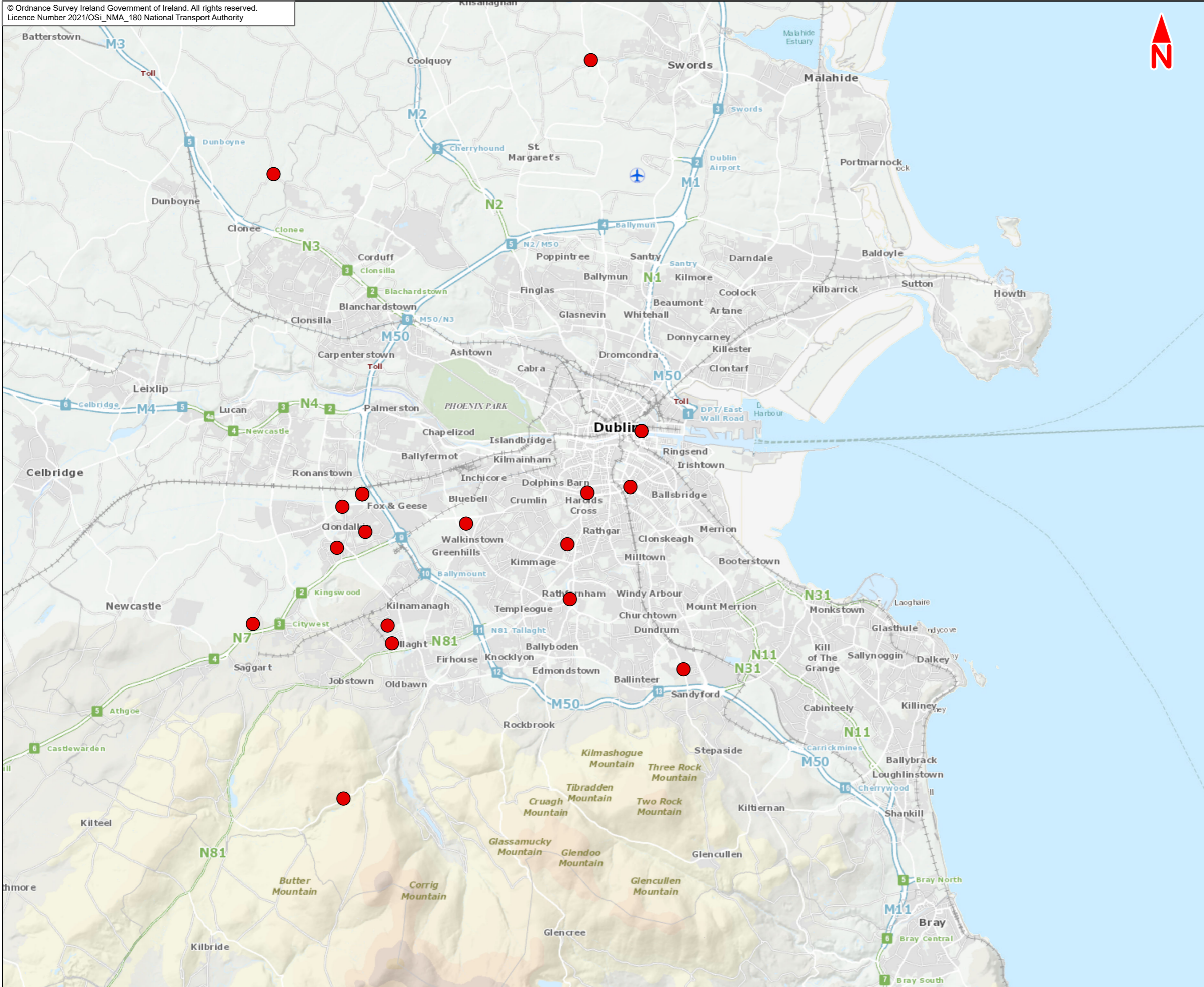


The background of the slide is a vibrant yellow. It is decorated with several abstract, overlapping shapes in shades of blue and green. These shapes include rounded rectangles, elongated ovals, and curved bands. Interspersed among these shapes are several white circles of varying sizes, some of which are partially enclosed by the blue and green shapes, creating a sense of depth and movement. The overall aesthetic is modern and dynamic.

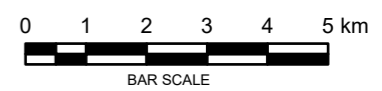
**18.1**  
Greater Dublin Region  
Waste Facility Permit Holders  
(Construction &  
Demolition Waste)





Legend :  
Waste Facility Permit Holders (Construction & Demolition Waste)  
● Permitted Facilities

Contains Irish Public Sector Data licensed under a Creative Commons Attribution 4.0 International (CC BY 4.0) licence



**Disclaimer**  
a. © National Transport Authority (NTA) 2021. This drawing is confidential and the copyright in it is owned by NTA. This drawing must not be either loaned, copied or otherwise reproduced in whole or in part or used for any purpose without the prior permission of NTA.  
b. This drawing is to be used for the design element identified in the title block. Other information shown is to be considered indicative only. The drawing is to be read in conjunction with all other relevant design drawings.  
c. O.S. data used for plans are printed under © Ordnance Survey Ireland Government of Ireland. All rights reserved. Licence Number 2021/OSI\_NMA\_180 National Transport Authority. All elevations are in metres and relate to OSI Geoid Model (OSGM15) Mean Head. All Co-ordinates are in Irish Transverse Mercator Grid (ITM) as defined by OSI active local GPS station.

d. Information concerning the position of apparatus shown on this drawing is based on drawings supplied by the utility owners and/or the utility works contractor, whilst every care has been taken in the preparation of this drawing, positions should be taken as approximate and are intended for general guidance only and no representation is made by the NTA as to the accuracy, completeness, sufficiency or otherwise of this drawing and the position of the apparatus. The information contained herein does not purport to be comprehensive or final as the apparatus is subject to being altered and/or superceded. Recipients should not rely on this information. Any liabilities are hereby expressly disclaimed.

e. The information contained herein has been provided by the NTA but does not purport to be comprehensive or final. Recipients should not rely on the information. Neither the NTA nor any of its directors, officers, employees, agents, stakeholders or advisers make any representation or warranty as to, or accept any liability or responsibility in relation to, the adequacy, accuracy, reasonableness or completeness of the information provided as part of this document or any matter on which the information is based (including but not limited to loss or damage arising as a result of reliance by recipients on the information or any part of it). Any liabilities are hereby expressly disclaimed.



Rev	Date	Drn	Chk'd	App'd	Description
M01	Feb 22	FG	EF	DK	ISSUE FOR PHASE 4 : PLANNING

Client  
**NTA**  
Udarás Náisiúnta Iompair  
National Transport Authority

Consultant  
**JACOBS ARUP SYSTRA**

Programme Title <b>BUSCONNECTS DUBLIN CORE BUS CORRIDORS INFRASTRUCTURE WORKS</b>				
Drawing Title Belfield / Blackrock to City Centre Core Bus Corridor Scheme Figure 18.1 Greater Dublin Region Waste Facility Permit Holders (Construction & Demolition Waste)				
Drawing File Name BCIDE-JAC-ENV_WS-1415_XX_00-DR-GG-0001	Sheet Number 1 of 1	Status A	Rev M01	

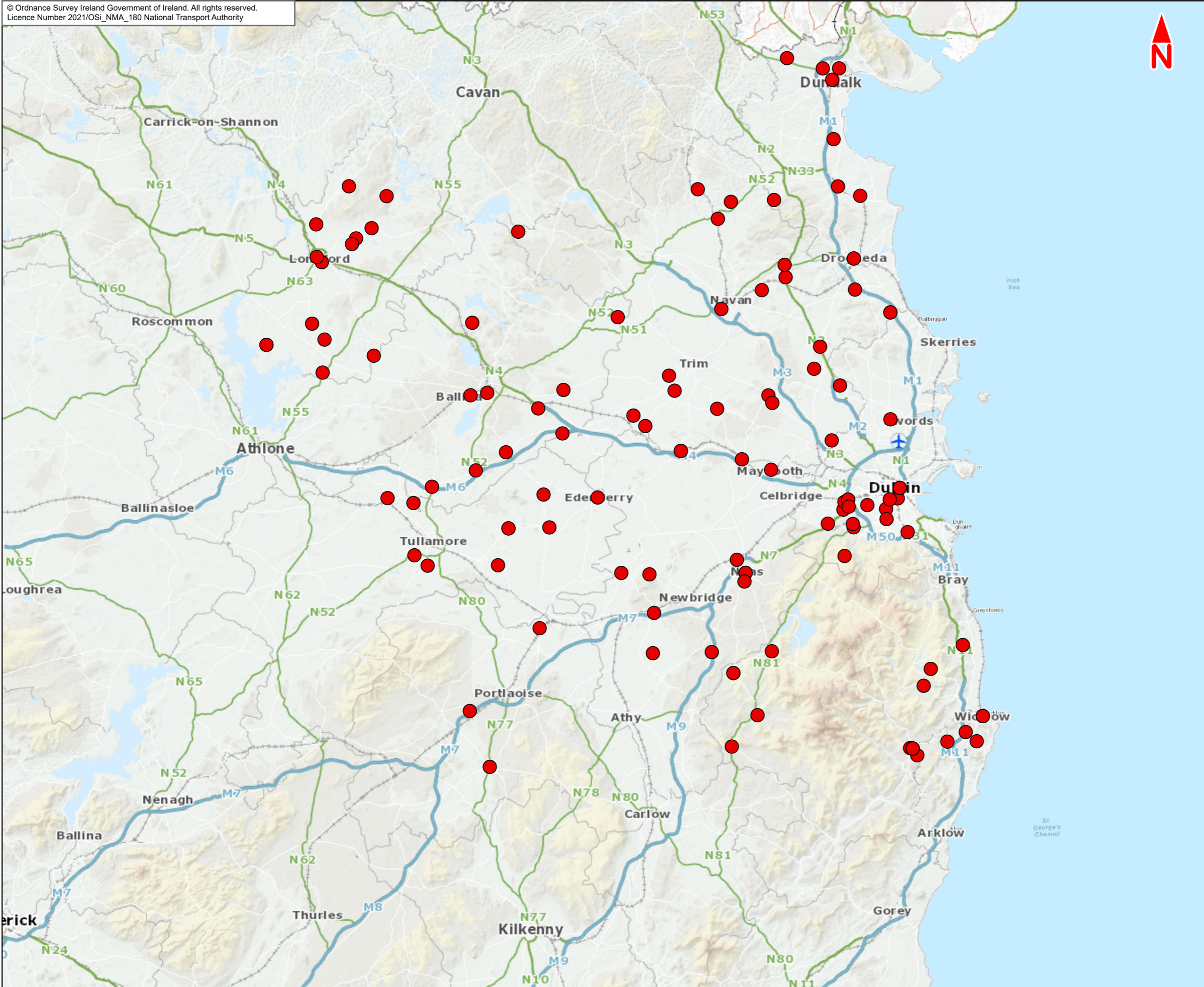
Date 21/2022	Scale @ A3 1:125,000	Drawn FG	Checked EF	Approved DK
Project Code BCIDE	Originator Code JAC	QMS Code		



The background features a vibrant yellow field with abstract, overlapping shapes in dark blue, light blue, and teal. Several white circles of varying sizes are scattered throughout, some appearing as if they are cutouts or holes in the design. The overall aesthetic is modern and geometric.

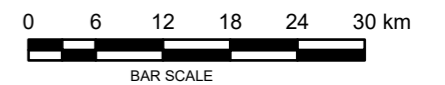
## 18.2 Eastern Midlands Waste Region Waste Facility Permit Holders (Construction & Demolition Waste)





Legend :  
Waste Facility Permit Holders (Construction & Demolition Waste)  
● Permitted Facilities

Contains Irish Public Sector Data licensed under a Creative Commons Attribution 4.0 International (CC BY 4.0) licence



**Disclaimer**  
a. © National Transport Authority (NTA) 2021. This drawing is confidential and the copyright in it is owned by NTA. This drawing must not be either loaned, copied or otherwise reproduced in whole or in part or used for any purpose without the prior permission of NTA.  
b. This drawing is to be used for the design element identified in the titleblock. Other information shown is to be considered indicative only. The drawing is to be read in conjunction with all other relevant design drawings.  
c. O.S. data used for plans are printed under © Ordnance Survey Ireland Government of Ireland. All rights reserved. Licence Number 2021/OSI\_NMA\_180 National Transport Authority. All elevations are in metres and relate to OSI Geoid Model (OSGM15) Mean Head. All Co-ordinates are in Irish

Transverse Mercator Grid (ITM) as defined by OSI active local GPS station.  
d. Information concerning the position of apparatus shown on this drawing is based on drawings supplied by the utility owners and/or the utility works contractor, whilst every care has been taken in the preparation of this drawing, positions should be taken as approximate and are intended for general guidance only and no representation is made by the NTA as to the accuracy, completeness, sufficiency or otherwise of this drawing and the position of the apparatus. The information contained herein does not purport to be comprehensive or final. Recipients should not rely on this information. Any liabilities are hereby expressly disclaimed.

e. The information contained herein has been provided by the NTA but does not purport to be comprehensive or final. Recipients should not rely on the information. Neither the NTA nor any of its directors, officers, employees, agents, stakeholders or advisers make any representation or warranty as to, or accept any liability or responsibility in relation to, the adequacy, accuracy, reasonableness or completeness of the information provided as part of this document or any matter on which the information is based (including but not limited to loss or damage arising as a result of reliance by recipients on the information or any part of it. Any liabilities are hereby expressly disclaimed.



Rev	Date	Drn	Chk'd	App'd	Description
M01	Feb 22	FG	EF	DK	ISSUE FOR PHASE 4 : PLANNING

Client  
**NTA**  
Údarás Náisiúnta Iompair  
National Transport Authority

Consultant  
**JACOBS ARUP SYSTRA**

Programme Title <b>BUSCONNECTS DUBLIN CORE BUS CORRIDORS INFRASTRUCTURE WORKS</b>				
Drawing Title Belfield / Blackrock to City Centre Core Bus Corridor Scheme Figure 18.2 Eastern Midlands Waste Region Waste Facility Permit Holders (Construction & Demolition Waste)				
Drawing File Name BCIDE-JAC-ENV_WS-1415_XX_00-DR-GG-0002	Sheet Number 1 of 1	Status A	Rev M01	

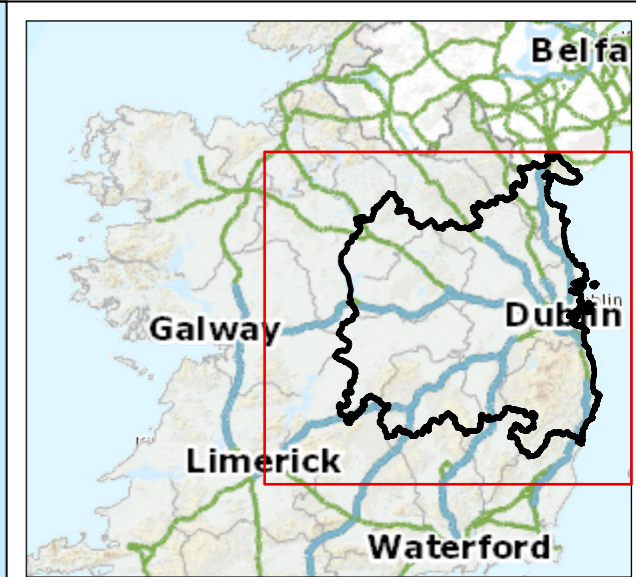
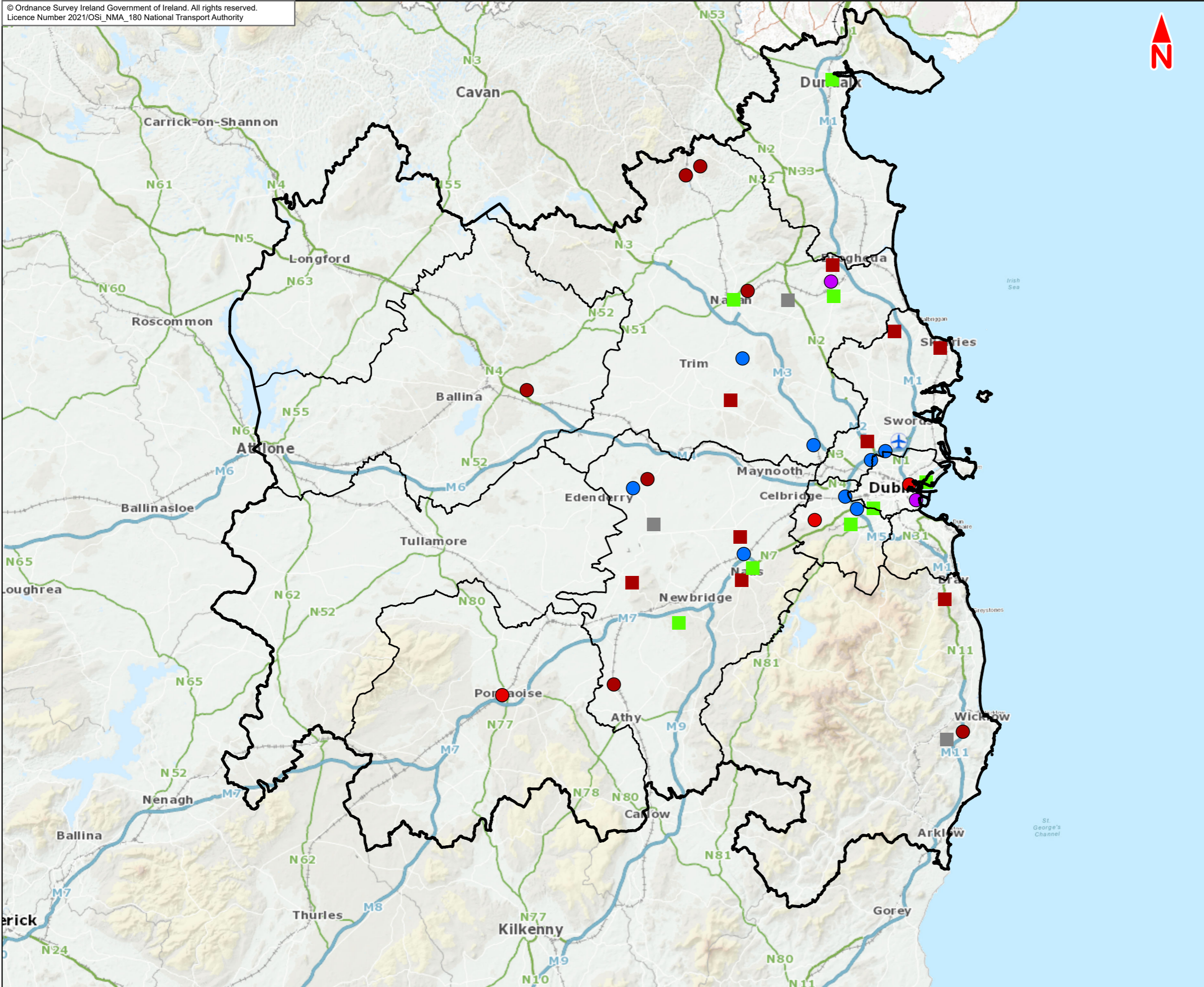
Date 02/01/22	Scale @ A3 1:675,000	Drawn FG	Checked EF	Approved DK
Project Code BCIDE	Originator Code JAC	QMS Code		





**18.3**  
Eastern Midlands Region  
EPA Licensed Facilities





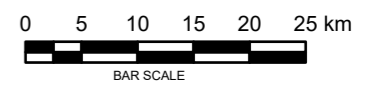
**Legend :**

- Local Authority Administration Boundaries
- Eastern Midlands Waste Region

**EPA Licensed Facility Type**

- Composting
- Energy From Waste (EFW)
- Hazardous Waste
- Material Recovery Facility (MRF)
- Landfill Sites
- Integrated Waste Management
- Soil Recovery

Contains Irish Public Sector Data licensed under a Creative Commons Attribution 4.0 International (CC BY 4.0) licence



**Disclaimer**  
a. © National Transport Authority (NTA) 2021. This drawing is confidential and the copyright in it is owned by NTA. This drawing must not be either loaned, copied or otherwise reproduced in whole or in part or used for any purpose without the prior permission of NTA.  
b. This drawing is to be used for the design element identified in the titleblock. Other information shown is to be considered indicative only. The drawing is to be read in conjunction with all other relevant design drawings.  
c. O.S. data used for plans are printed under © Ordnance Survey Ireland Government of Ireland. All rights reserved. Licence Number 2021/OSI\_NMA\_180 National Transport Authority. All elevations are in metres and relate to OSI Geoid Model (OSGM15) Mean Head. All Co-ordinates are in Irish

Transverse Mercator Grid (ITM) as defined by OSI active local GPS station.  
d. Information concerning the position of apparatus shown on this drawing is based on drawings supplied by the utility owners and/or the utility works contractor, whilst every care has been taken in the preparation of this drawing, positions should be taken as approximate and are intended for general guidance only and no representation is made by the NTA as to the accuracy, completeness, sufficiency or otherwise of this drawing and the position of the apparatus. The information contained herein does not purport to be comprehensive or final as the apparatus is subject to being altered and/or superseded. Recipients should not rely on this information. Any liabilities are hereby expressly disclaimed.

e. The information contained herein has been provided by the NTA but does not purport to be comprehensive or final. Recipients should not rely on the information. Neither the NTA nor any of its directors, officers, employees, agents, stakeholders or advisers make any representation or warranty as to, or accept any liability or responsibility in relation to, the adequacy, accuracy, reasonableness or completeness of the information provided as part of this document or any matter on which the information is based (including but not limited to loss or damage arising as a result of reliance by recipients on the information or any part of it. Any liabilities are hereby expressly disclaimed.



Rev	Date	Drn	Chk'd	App'd	Description
M01	Feb 22	FG	EF	DK	ISSUE FOR PHASE 4 : PLANNING

Client  
**NTA**  
Údarás Náisiúnta Iompair  
National Transport Authority

Consultant  
**JACOBS**  
**ARUP SYSTRA**

Programme Title <b>BUSCONNECTS DUBLIN CORE BUS CORRIDORS INFRASTRUCTURE WORKS</b>				
Drawing Title Belfield / Blackrock to City Centre Core Bus Corridor Scheme Figure 18.3 Eastern Midlands Region EPA Licensed Facilities				
Drawing File Name BCIDE-JAC-ENV_WS-1415_XX_00-DR-GG-0003	Sheet Number 1 of 1	Status A	Rev M01	

Date 21/2022	Scale @ A3 1:675,000	Drawn FG	Checked EF	Approved DK
Project Code BCIDE	Originator Code JAC	QMS Code		